

Moosraritäten in Nordostbayern Neu- und Wiederfunde 2018

© Walter Hollering, Wunsiedel

Südliches Fichtelgebirge: Basalt-Gipfelfelsen



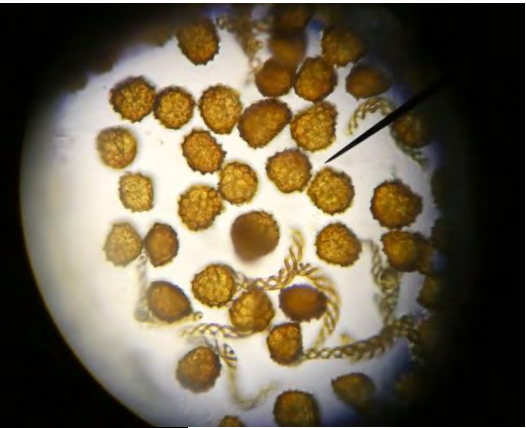
Gespitztes Trugzahnmoos (*Anomodon rugelii*), RL By 2



**Neckermoosähnliches Bäumchenmoos
(*Thamnobryum neckeroides*), RL By R**



**Inneres Fichtelgebirge:
Moor-Zipfelmoos (*Fossombronia foveolata*), RL By 3**



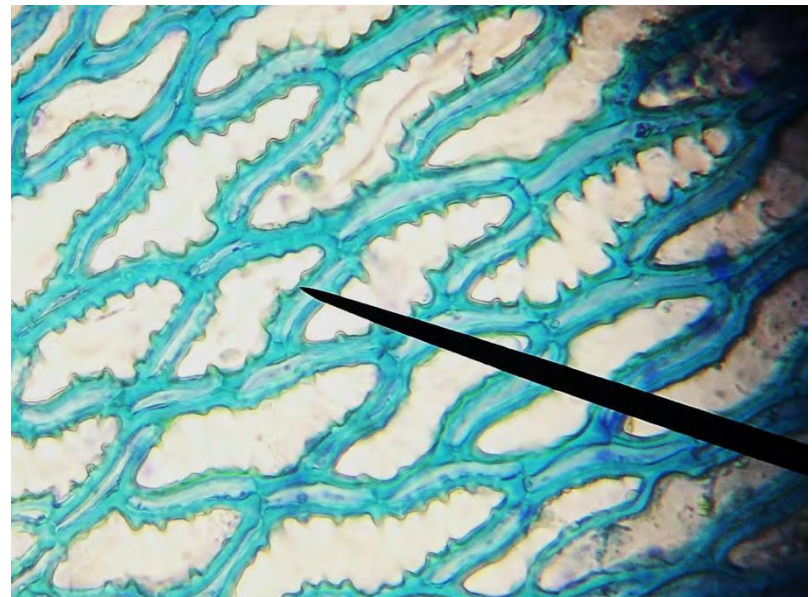
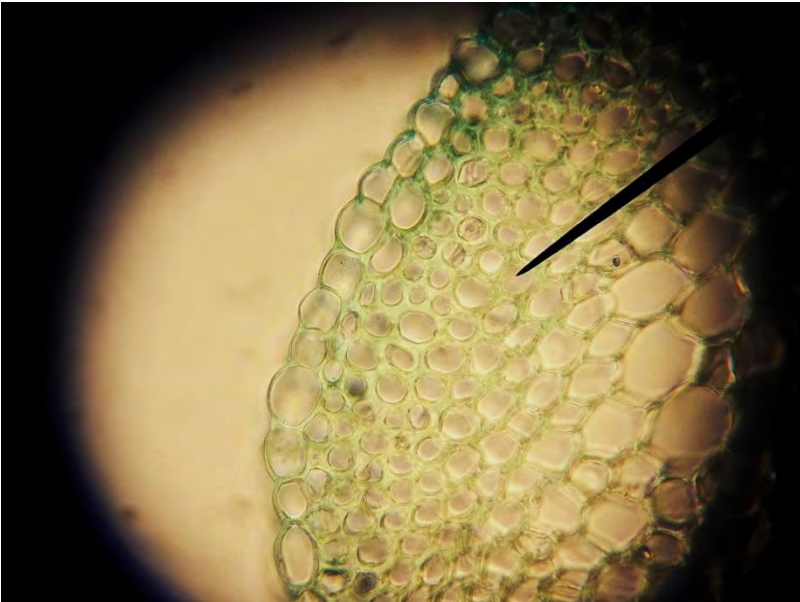
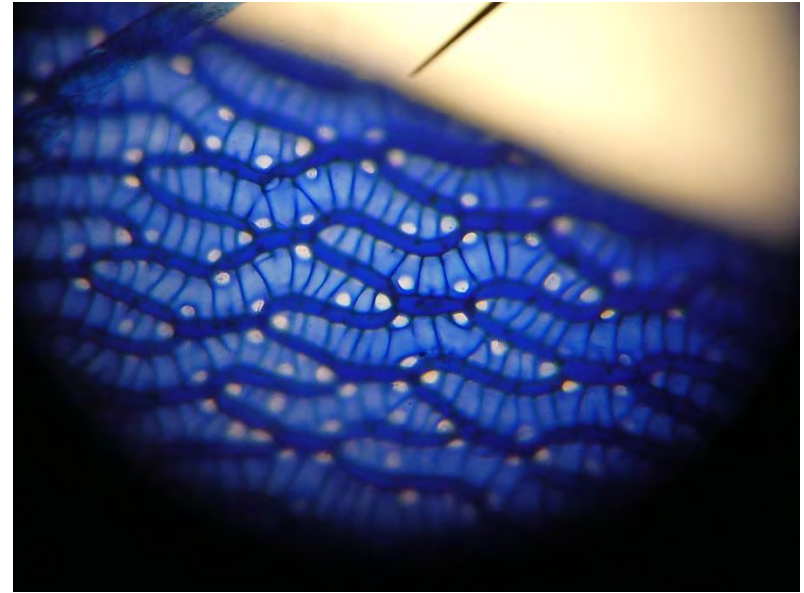
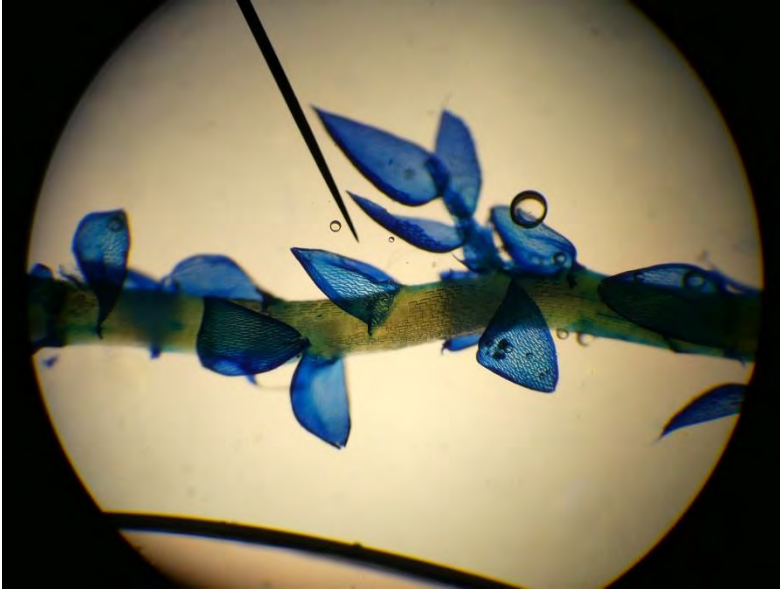
Inneres Fichtelgebirge: Biotoptyp Moorschlenke



Baltisches Torfmoos
(*Sphagnum balticum*), RL By S = extrem selten:



Baltisches Torfmoos (*Sphagnum balticum*), RL By S



Naab-Wondreb-Senke: Schlammflingsflur



Grubiges Sternlebermoos, RL By 3
(*Riccia cavernosa*)



Grubiges Sternlebermoos, RL By 3
(*Riccia cavernosa*)



**Weitmündiges Blasenmützenmoos
(*Physcomitrium eurystomum*), RL By 3**



**Wiederfund: Kugelförmiges Blasenmützenmoos
(*Physcomitrium sphaericum*), RL By 0**



Kugelförmiges Blasenmützenmoos
(Physcomitrium sphaericum)

